

MONTHLY MEMBERSHIP PROGRESS REPORT

LOCATION TEXAS

District 2 T2

Results as of: 6/30/2023

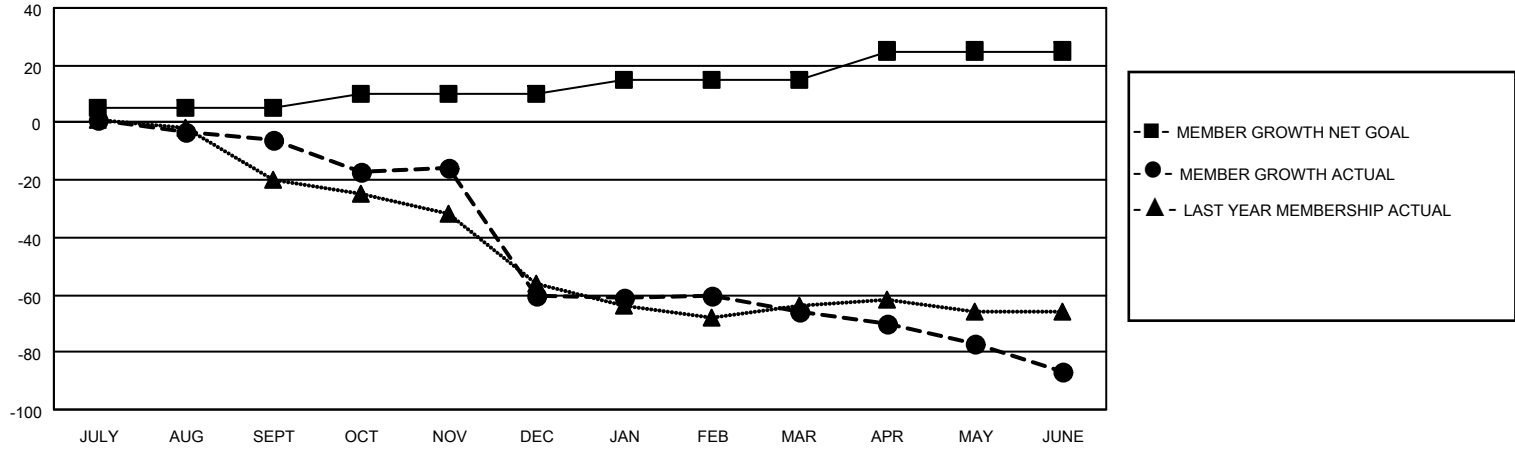
Clubs			
RESULTS FOR 2022-2023			
QUARTER	NEW CLUB GOAL	NEW CLUBS	DROPPED CLUBS
JULY/AUG/SEPT	0	0	0
OCT/NOV/DEC	0	0	2
JAN/FEB/MAR	0	0	1
APR/MAY/JUNE	1	0	1

Members			
RESULTS FOR 2022-2023			
QUARTER	MEMBER GROWTH NET GOAL	MEMBER GROWTH ACTUAL	DROPPED MEMBERS ACTUAL (including transfers)
JULY/AUG/SEPT	5	27	31
OCT/NOV/DEC	5	17	68
JAN/FEB/MAR	5	26	31
APR/MAY/JUNE	10	40	48

GOALS AND ACTUAL NEW CLUBS CUMULATIVE



GOALS AND ACTUAL MEMBERS CUMULATIVE



DROPPED CLUBS: 4	
DROPPED MEMBERS	
DECEASED	11
CLUB CANCELLED	37
OTHER	130
TOTAL	178

21 CLUBS OF 35 ADDED 1 OR MORE NEW MEMBERS

[CLICK HERE FOR CUMULATIVE MEMBERSHIP DATA](#)

<u>GENDER DISTRIBUTION</u>	
MALE	698 (71.74%)
FEMALE	274 (28.16%)
NON BINARY	0 (0.00%)
PREFER NOT TO ANSWER	1 (0.10%)
TOTAL FAMILY UNIT MEMBERS	97
FAMILY MEMBERS PAYING HALF DUES	49